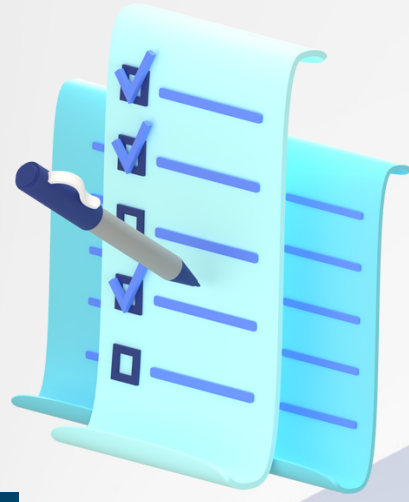




# HARE PSYCHOPATHY CHECKLIST



Name

Phone

## POINT SYSTEM

**2**

Definitely Present

**1**

Possibly Present

**0**

Definitely Absent

## QUESTIONS:

## RATING SCALE:

**GLIBNESS / SUPERFICIAL CHARM**

Definitely Present

Possibly Present

Definitely Absent




**PREVIOUS DIAGNOSIS AS PSYCHOPATH (OR SIMILAR)**




**EGOCENTRICITY / GRANDIOSE SENSE OF SELF-WORTH**




**PRONENESS TO BOREDOM / LOW FRUSTRATION TOLERANCE**




**PATHOLOGICAL LYING AND DECEPTION**




**CONNING / LACK OF SINCERITY**




**LACK OF REMORSE OR GUILT**




**LACK OF AFFECT AND EMOTIONAL DEPTH**




**CALLOUS OR LACK OF EMPATHY**




**PARASITIC LIFESTYLE**




**SHORT TEMPERED / POOR BEHAVIORAL CONTROLS**

## QUESTIONS:

## RATING SCALE:

Definitely  
Present

Possibly  
Present

Definitely  
Absent

PROMISCUOUS SEXUAL RELATIONS

EARLY BEHAVIOR PROBLEMS

LACK OF REALISTIC, LONG-TERM PLANS

IMPULSIVITY

IRRESPONSIBLE BEHAVIOR AS A PARENT

FREQUENT MARITAL RELATIONSHIPS

JUVENILE DELINQUENCY

POOR PROBATION OR PAROLE RISK

FAILURE TO ACCEPT RESPONSIBILITY FOR  
OWN ACTIONS

MANY TYPES OF OFFENSE

DRUG OR ALCOHOL ABUSE NOT DIRECT CAUSE  
OF ANTISOCIAL BEHAVIOR

### NOT PRESENT: SCORE 0-8 PTS

If the trait or behavior described in the item is not evident in the individual being assessed. Essentially, this means that the characteristic is not a notable aspect of their personality or behavior.

### PARTIAL OR LIMITED: SCORE 9-15 PTS

This score is given when there is a partial match or a limited degree of the trait or behavior in question. It suggests that the characteristic is present to some extent but is not a dominant or defining feature of the individual's personality.

### PRESENT: SCORE 16-22 PTS

A score of 2 is assigned when the trait or behavior is a good match or is strongly present in the individual. This indicates that the characteristic is a notable and consistent aspect of their personality or behavior.



**WE LEVEL UP TREATMENT CENTER PROVIDES WORLD-CLASS CARE WITH ROUND-THE-CLOCK MEDICAL PROFESSIONALS AVAILABLE TO HELP YOU COPE.**

**GET A FREE ASSESSMENT, FREE CONSULTATION, AND FREE ANSWERS TO YOUR QUESTIONS 24/7. WITHOUT ANY OBLIGATION.**